

5004 Global Chassis

Compact Fiber Access and Aggregation Platform



FTTH



10 Gbps



Scalable

Temperature
HardenedOpen
Architecture

Benefits

- Native IP/Ethernet Core
- Multiservice Support: GPON, XGS-PON, Combo PON, Active Ethernet, Carrier Ethernet, Triple-Play Services
- Open SDN Management via Mosaic Cloud Platform Plugin, and Traditional EMS
- Environmentally Hardened for Cabinet Deployments

Overview

The Adtran Total Access® 5004 (TA5004) is a carrier-class, compact 10G Fiber Access and Aggregation solution that simplifies high-capacity broadband services delivery into MDUs, emerging neighborhoods, remote cabinets and rural locations. The Total Access 5004 platform is part of the Adtran Total Access 5000 series, the industry's marketing leading 10G Fiber Access and Aggregation platform, with over 450 customers and 60,000 nodes deployed across 68 countries.

With a pure IP/Ethernet core, the Total Access 5004 fiber access platform supports more than seven fiber access technologies and easily scales to support even the most bandwidth-intensive applications in a compact 2RU form factor. In addition, the Total Access 5004 supports highly scalable, integrated aggregation utilizing multiple 10GE interfaces.

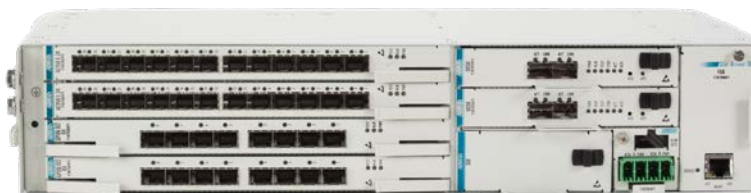
Environmentally hardened, the Total Access 5004 can be deployed in central exchanges, remote street cabinets, or in the TA5004 Micro Cabinet to expand multigigabit services to

the most remote and rural areas. The Total Access 5004 platform includes a highly scalable architecture that is designed to evolve with the network, providing flexible fiber options in a truly diverse network application driven by service provider needs.

The compact Total Access 5004 supports GPON, XGS-PON, Combo PON (GPON+XGS-PON), Point-to-Point Active Ethernet, and dedicated Carrier Ethernet services among others, enabling delivery of multigigabit residential and business services into MDUs, suburban locations and rural areas. The Total Access 5004 supports up to four temperature-hardened access module slots, with integrated Nx10GE support to each slot providing a comprehensive solution to launch and expand full-fiber networks.

The Total Access 5000 Series can be managed via the Adtran Mosaic Cloud Platform, our SDN control and orchestration solution, or the Adtran Advanced Operational Environment (AOE), a traditional element management system.

The Total Access 5000 Series works in concert with Adtran's suite of residential CPE which includes our latest Wi-Fi 5/6 Service Delivery Gateways, Fiber-to-the-Home Gateways, Mesh Wi-Fi, and a comprehensive portfolio of indoor and outdoor XGS-PON and GPON ONTs. The Total Access 5004 is designed for deployment in 19-inch, 21-inch, and 23-inch relay racks and has four access module slots.



TOTAL ACCESS 5004

Product Specifications

Interfaces

- Uplink: 2x1/10GE
- Transport: 8x1/10GE via ETOS-10 Transport Module
- Management: 10/100Base-T Ethernet Port

Applications and Services

- 10G FTTH for Gigabit and Multi-gigabit Broadband
- Optical Networking Edge (ONE) for Premium (SLA) 10G Services, Aggregation, and Transport
- Carrier Ethernet Services Over Any Medium

Physical

- Dimensions: 3.5 in. x 17.2 in. x 10.9 in. (89 mm x 438 mm x 278 mm) (H x W x D)
- Weight: 8.1 lbs (3.7 kgs)
- Two Rack-mountable Units (2RU)

Management

- Mosaic Software Suite
- Advanced Operational Environment (AOE)
- Remote Management Through SNMP, CLI, and Web-Service APIs (HTTPS)
- Ethernet Interface on SCM for Web and Telnet/SSH Access (in-band or out-of-band)

Environmental

- Operating Temperature: -40° F to +149° F (-40° C to +65° C)
- Storage Temperature: -40° F to +185° F (-40° C to +85° C)
- Relative Humidity: Up to 95%, Non-condensing

Electrical

- Nominal Powering Voltage: -48 VDC
- Power Terminal: Redundant A and B Power Feeds

Regulatory Standards

- EN 60950-1
- AS/NZ 60950
- IEC 60950-1
- EN 300 386
- RoHS

Ordering Information

Equipment	Part No.
Total Access 5004 Chassis Kit (Includes Chassis, Redundant MSM20s, Power/Alarm Module, and Fan)	41875416F1
Common Modules	
Total Access 5004 MSM20 2x10GE (SFP+)	1187016F1
Total Access 5004 Power/Alarm Module	1187064F1
Spares & Accessories	
Total Access 5004 Filter (10 Pack)	1187092F1
Total Access 5004 Fan Module	1187094F1
Total Access 5004 23-inch Brackets	1187072F1

Adtran

Adtran Corporate Headquarters
901 Explorer Boulevard
Huntsville, AL 35806
USA
adtran.com
sales@adtran.com

Adtran Europe Limited
Building 2200 Basing View
Basingstoke RG-21 4EQ, UK
contact@adtran.com

Adtran GmbH
Jean-Monnet-Straße 4,
10557 Berlin, Germany
kontakt@adtran.com

Adtran Networks Pty. Limited
L5 330 Collins Street
Melbourne, Victoria, 3000
Australia
australia@adtran.com

641875416F1-8B

May Copyright © 2022 Adtran, Inc. All rights reserved. Adtran believes the information in this publication to be accurate as of publication date, and is not responsible for error. Specifications subject to change without notice. Adtran and the other trademarks listed at www.adtran.com/trademarks are registered trademarks of Adtran, Inc. or its affiliates in various countries. All other trademarks mentioned in this document are the property of their respective owners.

Adtran warranty duration and entitlements vary by product and geography. For specific warranty information, visit www.adtran.com/warranty

Adtran products may be subject to U.S. export controls and other trade restrictions. Any export, re-export, or transfer of the products contrary to law is prohibited. For more information regarding exportation of Adtran items (e.g. commodities, technology, software), please visit www.adtran.com/exportlicense.

